

WASTEWATER-BASED EPIDEMIOLOGICAL SURVEILLANCE OF THE SARS-COV-2

— WEEKLY REPORT

— RESULTS OF 04/10/2023

Authors: R. Janssens¹, H. Maloux¹, S. Hanoteaux¹, V. Hutse¹, L. Van Poelvoorde², N. Roosens², B. Verhaegen³, K. Van Hoorde³, K. Dierick³, K. Blot¹, M. Lesenfants^{1*}

¹ Sciensano, Service Epidemiology of infectious diseases

² Sciensano, Transversal activities in Applied Genomics

³ Sciensano, Service Foodborne pathogens

*Contact and Info: wastewater.info@sciensano.be

In collaboration with:



1. Table of contents

1. Table of contents	2
2. Summary	3
3. Introduction	4
4. Methodology	4
4.1. SAMPLE COLLECTION AND ANALYSIS	4
4.2. WASTEWATER RESULTS	5
4.3. ALERTING INDICATORS	5
4.4. CAUTION POINTS FOR THE RESULTS INTERPRETATION.....	6
5. Results	7
5.1. NATIONAL LEVEL	7
5.2. REGIONAL LEVEL.....	10
5.3. PROVINCIAL LEVEL	12
5.4. INDIVIDUAL CATCHMENT AREAS LEVEL.....	14
6. Appendix – Areas classified by alerting indicator	16

2. Summary

In the present work, the circulation of the SARS-CoV-2 virus in the environment is assessed based on three alerting indicators. The analysis of wastewater samples collected in 42 wastewater treatment plants covers 45% of the Belgian population. The results of the wastewater surveillance are a complementary source of information to the infection cases number. Indeed, the wastewater results do notably include all asymptomatic persons, and are independent of the testing strategy.

Here are the conclusions based on the latest results of October 04th 2023 (Week 40)¹:

- At the national level: The numbers of areas in High Circulation has decreased with 10 areas positive. The number of areas in Increasing Trend have increased with 12 areas positive. Overall, the viral loads are at moderate level and are slightly increasing.
 - At the regional level: The Increasing Trend Indicator is positive in Flanders. The High Circulation indicator is positive in Wallonia. None of the three indicators is positive in Brussels.
 - At the provincial level: The Increasing Trend indicator is positive in 2 provinces: Antwerpen and West-Vlaanderen, and was in 3 last week. The Fast Increase indicator is positive in 2 provinces: Antwerpen and Limburg, and was in none last week. The High Circulation indicator is positive in 5 provinces: Antwerpen, Brabant Wallon, Limburg, Luxembourg and Namur, and was in 5 last week.
 - At the covered areas level: among the 40 areas covered, the number of treatment plants positive to the different indicators are 12 for the Increasing Trend indicator, 3 for the Fast Increase indicator, and 10 for the High Circulation indicator.
 - An alerting situation is evidenced for the covered areas of Amay, Deurne and Genk as all three indicators are positive.
-

The wastewater situation can be followed on a weekly basis on:

- The graphics available on the public [COVID-19 dashboard](#)
 - The epidemiological update published on Fridays by the Risk Assessment Group (RAG) after validation by the Risk Management Group (RMG) in [French](#) and [Dutch](#).
 - Further details on the methodology applied for the wastewater surveillance can be found in [the Appendix Methodology document \(access available online\)](#).
-

¹ The wastewater surveillance is based on 41 areas. However, due to technical issues, the area of Aartselaar was not sampled this week (see Appendix A5). Hence, this week's report is only based on 40 areas.

3. Introduction

The national wastewater-based surveillance of COVID-19 started in September 2020. The present report aims to assess the wastewater-based epidemiological situation in Belgium. It is updated weekly on Tuesday based on the concentration measured in the samples during the previous week.

The SARS-CoV-2 concentrations are measured twice per week in 42 wastewater treatment plants (WWTPs). The evolution of these concentrations is assessed in the present report thanks to three wastewater-based alerting indicators. The assessment is performed at 4 different spatial levels: national, regional, provincial, and the areas covered by the treatment plants.

Finally, the remaining sources of uncertainties are discussed together with their expected impacts on the interpretation of the wastewater results.

4. Methodology

4.1. SAMPLE COLLECTION AND ANALYSIS

Samples are collected twice a week in several wastewater treatment plants (WWTP) covering around 42% of the Belgian population: 36% in the Flemish region, 34.5% in the Walloon region, and nearly 100% in the Brussels region. Figure 1 shows the catchment areas covered by the WWTP located in areas with high population density. The catchment area of a WWTP corresponds to the geographical area from which the wastewater are collected.

Samples are collected on Mondays and Wednesdays by auto-samplers (24-hour composite) at the influent of WWTP. The analysis are distributed amongst 3 different laboratories to quantify the concentration of SARS-CoV-2 RNA. The results corresponding to the samples of the Mondays and Wednesdays are made publicly available on Wednesdays and Fridays, respectively.

Further details on the coverage, sampling plan, and analytical method can be found in [the Appendix Methodology document](#)

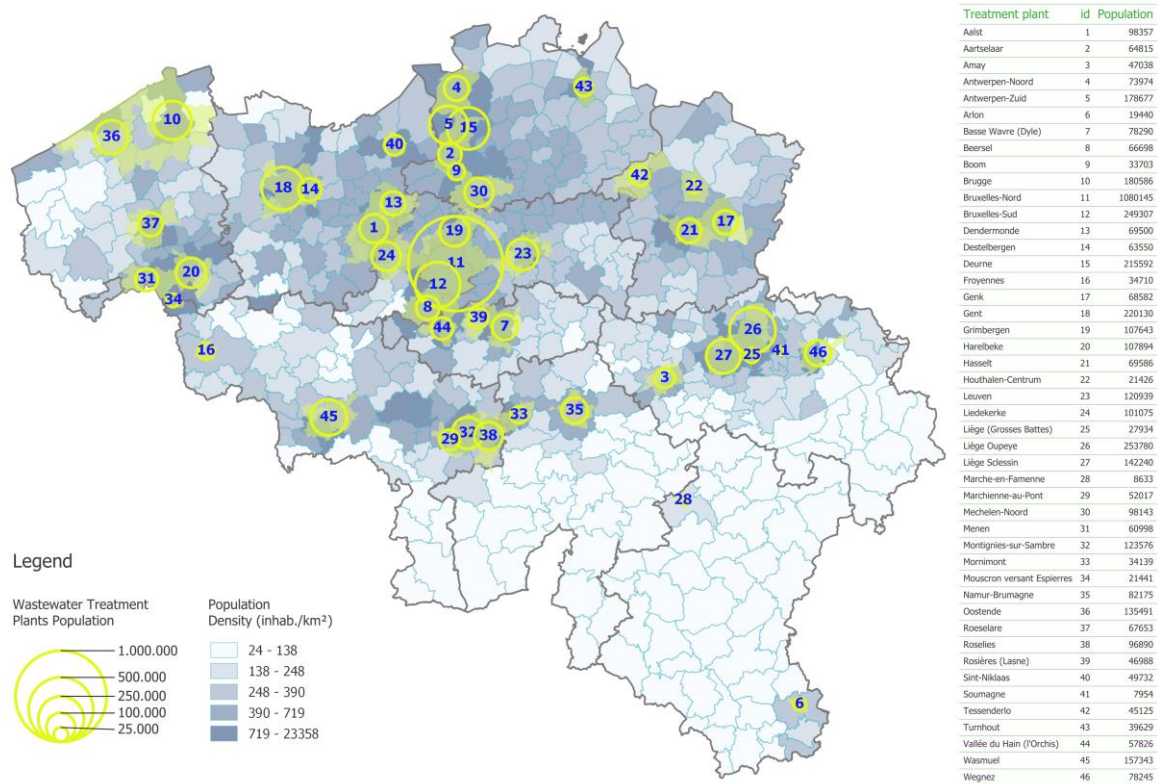


Figure 1: The population located in the areas covered by the wastewater treatment plants (highlighted in yellow) and the population density for each municipality (indicated by the blue scale).

4.2. WASTEWATER RESULTS

In order to account for possible dilution by rainy events and for the number of people living in the catchment area of each WWTP, a correction is applied on the viral concentration: the concentration is multiplied by the inlet flow and divided by the number of inhabitant of its respective WWTP and expressed by 100k inhabitant. The viral loads are expressed in copy/day/100k inhabitants.

The limit of quantification of the analytical method was estimated at 10 copies/ml.

4.3. ALERTING INDICATORS

To highlight the areas of possible concern, the three alerting indicators are assessed twice a week, based on viral loads (RNA copies/day/100k inhabitants):

1. The **Increasing Trend** indicator highlights the catchment areas where the viral loads have been increasing for more than 6 days. The indicator is computed based on the moving average on the past two weeks of the viral load.
2. The **Fast Increase** indicator highlights the catchment areas where the viral loads have rapidly increased for the last week. It corresponds to a situation where the moving average on the past 7 days of the viral load has increased faster than 70% per week if being above the estimated limit of quantification. The increasing slope is normalized for each treatment plant.
3. The **High Circulation** indicator highlights the catchment areas where the viral loads are high. It corresponds to a situation where the viral loads exceed half of the highest value recorded during the ninth wave (i.e. from 21th of November 2022 till first of January 2023).

The indicators were developed to monitor the different phases of an outbreak. the indicator Increasing Trend will be on alert first in the emerging phase. If the viral loads increase quickly, the Fast Increase indicator will then turn on alert. Finally, the viral loads may be sufficiently high to result in the High Circulation indicator to turn on alert.

4.4. CAUTION POINTS FOR THE RESULTS INTERPRETATION

The viral loads should not be directly compared between catchment areas, provinces, nor regions because analyses are conducted by three different laboratories. To mitigate this bias, the indicators are computed on normalized viral loads, allowing for comparison between the different areas. Further details are available in [the methodology document \(access online\)](#).

5. Results

5.1. NATIONAL LEVEL

Table 1 shows, at the national level, the results obtained on the last sample of October 04th 2023, week 40, compared to the ones obtained on September 27th 2023. In this table, any change in indicator positivity (i.e. if the value for any indicator has changed from 0 to 1 or from 1 to 0) is indicated in **coloured bold text**.

None of the three indicators is positive at the national level.

Table 1: Alerting indicators positive (1) or not (0) on October 04th 2023. Columns represent the population coverage of Belgium (Pop. coverage) and the three alerting indicators High Circulation (High), Fast Increase (Fast) and Increasing Trend (Incr.). The specifications of the four last columns are explained in the footnotes 1-4 below the table. Missing data is indicated with a “/”.

Country	Pop. coverage	High	Fast	Incr.	Norm. viral load (%) ¹	Mean viral load ²	Norm. evol. (%/week) ³	Incr. days ⁴
Belgium	44%	0	0	0	38	0.53	-4	3

¹ : the viral load normalized with the maximum viral load measured in the corresponding catchment area during the ninth wave (i.e. from 21th of November 2022 till the first of January 2023).
² : the viral load computed on the mean of the replicate of the three targeted gene fragments as explained in section “3.2 Wastewater results”. The mean viral load is expressed in 10¹² copies/day/100k inhabitants.
³ : the slope (%/week) of the past 7 days moving average of the viral load if the corresponding concentration is above the estimated limit of quantification.
⁴ : the cumulative number of days of increase of the past 14 days moving average of the viral load.

The geographical location of the areas is presented in Figure 2 together with the status of the three indicators.

The number of areas in High Circulation has decreased with 10 areas positive. The number of areas in Increasing Trend have increased with 12 areas positive. Overall, the viral loads are at moderate level and are slightly increasing.

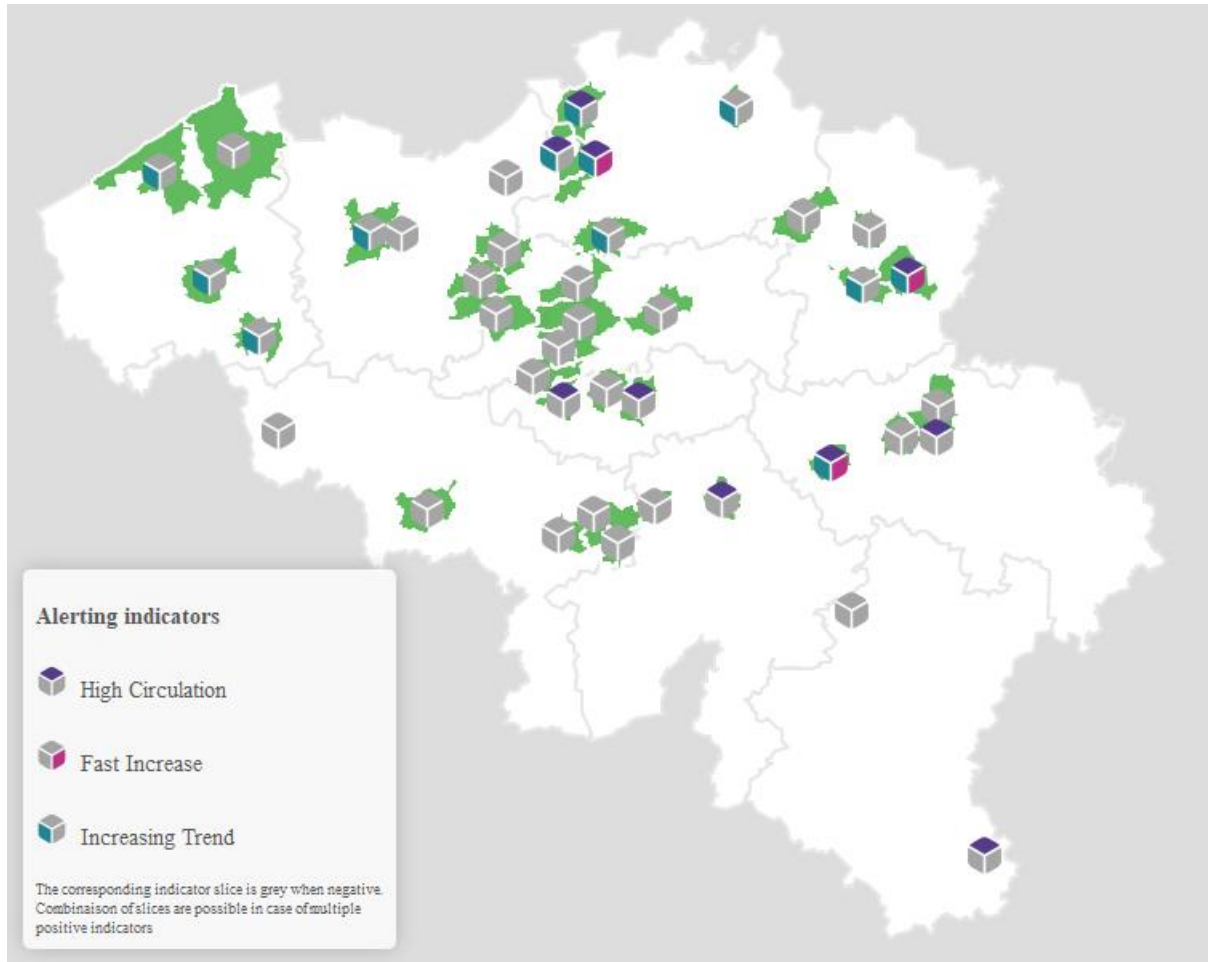


Figure 2: The geographical location of the covered areas with the corresponding status of the three alerting indicators: High circulation, Fast Increase and Increasing trend. If an indicator is positive its corresponding slice is displayed in its colour (see legend) whereas when negative the same slice is greyed out. The names of the covered areas with respect of their localization can be found in Figure 1.



Figure 3: Number of areas having a positive alerting indicator (coloured bars), number of areas having a negative indicator (lighter coloured bars) and number of areas not sampled (greyed out bars). Latest results correspond to October 04th 2023, week 40.

5.2. REGIONAL LEVEL

Figure 4 shows, at the regional level, the viral loads in the wastewaters.

Two waves can be seen in Figure 4:

- The 9th wave starting on 21st November 2022.
- The 10th wave starting on 23rd January 2023.

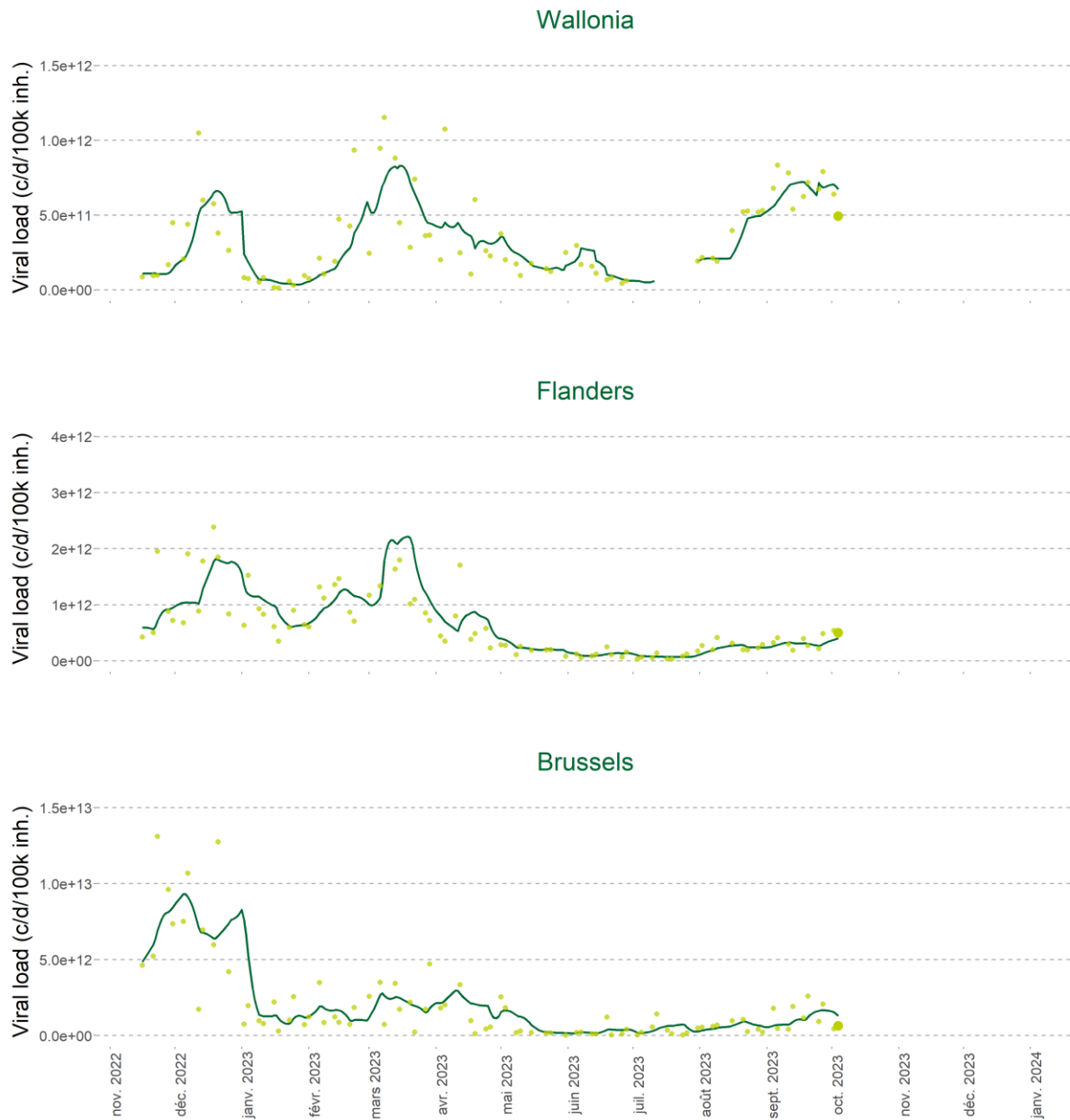


Figure 4: The SARS-CoV-2 RNA viral loads expressed as copies/days/100k inhabitants (based on the past two weeks moving average) for the three regions.

Table 2 shows, at the regional level, the results obtained on the last sample of Wednesday October 04th 2023, week 40. It allows to track the changes between the situation as of today (October 04th 2023) and the situation as of last week (September 27th 2023). Hereby, two distinct cases are taken into account:

1. If a region has at least one indicator fulfilled this week and it was not the case last week, its **name is displayed in bold** in the table.
2. If a region has at least one indicator fulfilled this week and if it also was the case last week, any change in indicator fulfilment (i.e. if the value for any indicator has changed from 0 to 1 or from 1 to 0) is indicated in **coloured bold text**.

The Increasing Trend Indicator is positive in Flanders. The High Circulation indicator is positive in Wallonia. None of the three indicators is positive in Brussels.

Table 2: Alerting indicators positive (1) or not (0) on October 04th 2023. Columns represent the population coverage of the regions (Pop. coverage) and the three alerting indicators High Circulation (High), Fast Increase (Fast) and Increasing Trend (Incr.). The specifications of the four last columns are explained in the footnotes 1-4 below the table. Missing data is indicated with a “/”.

Region	Pop. coverage	High	Fast	Incr.	Norm. viral load (%) ¹	Mean viral load ²	Norm. evol. (%/week) ³	Incr. days ⁴
Brussels	100%	0	0	0	4.6	0.63	-63	0
Flanders	41%	0	0	1	46.4	0.50	28	7
Wallonia	31%	1	0	0	59.7	0.49	2	1

¹ : the viral load normalized with the maximum viral load measured in the corresponding catchment area during the ninth wave (i.e. from 21th of November 2022 till the first of January 2023).

² : the viral load computed on the mean of the replicate of the three targeted gene fragments as explained in section “3.2 Wastewater results”. The mean viral load is expressed in 10¹² copies/day/100k inhabitants.

³ : the slope (%/week) of the past 7 days moving average of the viral load if the corresponding concentration is above the estimated limit of quantification.

⁴ : the cumulative number of days of increase of the past 14 days moving average of the viral load.

5.3. PROVINCIAL LEVEL

Table 3 shows, at the provincial level, the results obtained on the last sample of Wednesday October 04th 2023, week 40. It allows to track the changes between the situation as of today (October 04th 2023) and the situation as of last week (September 27th 2023). Hereby, two distinct cases are taken into account:

1. If a province has at least one indicator fulfilled this week and it was not the case last week, its **name is displayed in bold** in the table.
2. If a province has at least one indicator fulfilled this week and if it also was the case last week, any change in indicator fulfilment (i.e. if the value for any indicator has changed from 0 to 1 or from 1 to 0) is indicated in **coloured bold text**.

Table 3 shows, for each Province, the results associated with the samples of Wednesday October 04th 2023, for the three alerting indicators:

- The Increasing Trend indicator is positive in 2 provinces: Antwerpen and West-Vlaanderen, and was in 3 last week.
- The Fast Increase indicator is positive in 2 provinces: Antwerpen and Limburg, and was in none last week.
- The High Circulation indicator is positive in 5 provinces: Antwerpen, Brabant Wallon, Limburg, Luxembourg and Namur, and was in 5 last week.
- The province of Antwerpen is of particular concern as 3 indicators are positive in this province.
- It should be noted that although the 50% threshold of viral load is not exceeded (in comparison to the highest level observed during the 9th wave), the viral load in the province of Liège remains high (with 46.0%).

Table 3: Alerting indicators positive (1) or not (0) on October 04th 2023. Columns represent the population coverage of the WWTPs within the Province (Pop. coverage) and the three alerting indicators High Circulation (High), Fast Increase (Fast) and Increasing Trend (Incr.). The specifications of the four last columns are explained in the footnotes 1-4 below the table. Missing data is indicated with a “/”.

Province	Pop. coverage	High	Fast	Incr.	Norm. viral load (%) ¹	Mean viral load ²	Norm. evol. (%/w) ³	Incr. days ⁴
Antwerpen	36%	1	1	1	127.3	0.80	76	10
Brabant Wallon	44%	1	0	0	73.3	0.53	-44	0
Brussels	100%	0	0	0	4.6	0.63	-63	0
Hainaut	34%	0	0	0	31.8	0.38	24	1
Liège	42%	0	0	0	46.0	0.43	6	1
Limburg	24%	1	1	0	69.8	0.95	97	6
Luxembourg	10%	1	0	0	53.6	0.75	-57	0
Namur	25%	1	0	0	206.8	1.06	-17	0
Oost-Vlaanderen	34%	0	0	0	11.3	0.21	10	5
Vlaams-Brabant	43%	0	0	0	8.1	0.54	-14	2
West-Vlaanderen	41%	0	0	1	3.6	0.20	0	9

¹ : the viral load normalized with the maximum viral load measured in the corresponding catchment area during the ninth wave (i.e. from 21th of November 2022 till the first of January 2023).

² : the viral load computed on the mean of the replicates of the three targeted gene fragments as explained in section “3.2 Wastewater results”. The mean viral load is expressed in 10¹² copies/day/100k inhabitants.

³ : the slope (%/week) of the past 7 days moving average of the viral load if the corresponding concentration is above the estimated limit of quantification.

⁴ : the cumulative number of days of increase of the past 14 days moving average of the viral load.

5.4. INDIVIDUAL CATCHMENT AREAS LEVEL

Table 4 shows, at the catchment area level, the results obtained on the last sample of Wednesday October 04th 2023, week 40. It allows to track the changes between the situation as of today (October 04th 2023) and the situation as of last week (September 27th 2023). Hereby, three distinct cases are taken into account:

1. If an area has at least one indicator fulfilled this week and it was not the case last week, its **name is displayed in bold** in the table.
2. If an area has at least one indicator fulfilled this week and if it also was the case last week, any change in indicator fulfilment (i.e. if the value for any indicator has changed from 0 to 1 or from 1 to 0) is indicated in **coloured bold text**.

Any area which had at least one indicator fulfilled last week but not this week is listed below Table 4.

Here are the results associated with the samples of October 04th 2023:

- The Increasing Trend indicator is positive in 12 covered areas. Amongst these areas, the viral load is continually increasing since two or more weeks in 3 areas: Oostende (16 days), Harelbeke (14 days) and Mechelen-Noord (14 days). Further details can be found in Appendix A3. Last week, this indicator was positive in 11 covered areas.
- The Fast Increase is positive in 3 covered areas: Genk (201.2% increase per week), Deurne (149.5% increase per week) and Amay (112.4% increase per week) (see Appendix A2 for more details). Last week, this indicator was positive in 7 covered areas.
- The High Circulation indicator is positive in 10 covered areas. The full list of these areas can be found in Appendix A1. Last week, this indicator was positive in 14 covered areas.
- An alerting situation is evidenced for the covered areas of Amay, Deurne and Genk as all three indicators are positive.

The wastewater results at the level of the local covered areas can be accessed online for each area on the [COVID-19 dashboard](#).

Table 4: Alerting indicators positive (1) or not (0) on October 04th 2023. Columns represent the provinces, different WWTPs within the Provinces and the three alerting indicators High Circulation (High), Fast Increase (Fast) and Increasing Trend (Incr.). The specifications of the four last columns are explained in the footnotes 1-4 below the table. Missing data is indicated with a “/”.

Province	WWTP	High	Fast	Incr.	Norm. viral load (%) ¹	Mean viral load ²	Norm evol. (%/week) ³	Incr. days ⁴
Liège	Amay	1	1	1	245.51	1.19	112.4	9
Antwerpen	Antwerpen-Noord	1	0	1	93.39	0.51	67.1	9
Antwerpen	Antwerpen-Zuid	1	0	1	74.26	0.60	23.3	9
Luxembourg	Arlon	1	0	0	57.90	0.80	-52.4	0
Brabant Wallon	Basse Wavre (Dyle)	1	0	0	75.63	0.50	-59.2	0
Antwerpen	Deurne	1	1	1	255.33	1.41	149.5	9
Limburg	Genk	1	1	1	155.23	2.35	201.2	9
Oost-Vlaanderen	Gent	0	0	1	3.34	0.15	0.0	9
West-Vlaanderen	Harelbeke	0	0	1	1.07	0.08	0.0	14
Limburg	Hasselt	0	0	1	37.89	0.36	47.2	9
Liège	Liege (Grosses Battes)	1	0	0	84.57	1.04	-55.5	0
Antwerpen	Mechelen-Noord	0	0	1	15.79	0.31	47.7	14
Namur	Namur-Brumagne	1	0	0	284.29	1.32	-27.1	0
West-Vlaanderen	Oostende	0	0	1	2.40	0.23	0.0	16
West-Vlaanderen	Roeselare	0	0	1	4.03	0.13	0.0	9
Antwerpen	Turnhout	0	0	1	9.30	0.21	0.0	9
Brabant Wallon	Vallee du Hain (L'Orchis)	1	0	0	102.87	0.80	-33.8	0

¹ : the viral load normalized with the maximum viral load measured in the corresponding catchment area during the ninth wave (i.e. from 21th of November 2022 till the first of January 2023).

² : the viral load computed on the mean of the replicates of the three targeted gene fragments as explained in section “3.2 Wastewater results”; The mean viral load is expressed in 10¹² copies/day/100k inhabitants.

³ : the slope (%/week) of the past 7 days moving average of the viral load if the corresponding concentration is above the estimated limit of quantification.

⁴ : the cumulative number of days of increase of the past 14 days moving average of the viral load.

The following areas had the corresponding indicator positive last week but not this week:

- Increasing Trend indicator: Aalst, Beersel, Brugge, Grimbergen, Marchienne-au-Pont and Wasmuel.
- Fast Increase indicator: Liege Sclessin, Mornimont and Sint-Niklaas.
- High Circulation indicator: Destelbergen, Froyennes, Liedekerke, Liege Sclessin, Mornimont, Roselies and Sint-Niklaas.

-

Further details on covered area without positive indicators can be found in Table A4.

6. Appendix – Areas classified by alerting indicator

Table A1: Areas for which the High Circulation indicator is positive (10 out of 42 on October 04th 2023).

Province	WWTP	High	Fast	Incr.	Norm. viral load (%) ¹	Mean viral load ²	Norm evol. (%/week) ³	Incr. days ⁴	Date Max cc ⁵
Namur	Namur-Brumagne	1	0	0	284.29	1.32	-27.1	0	27/09/2023
Antwerpen	Deurne	1	1	1	255.33	1.41	149.5	9	08/03/2023
Liège	Amay	1	1	1	245.51	1.19	112.4	9	15/03/2023
Limburg	Genk	1	1	1	155.23	2.35	201.2	9	08/03/2023
Brabant Wallon	Vallee du Hain (L'Orchis)	1	0	0	102.87	0.80	-33.8	0	25/09/2023
Antwerpen	Antwerpen-Noord	1	0	1	93.39	0.51	67.1	9	08/03/2023
Liège	Liege (Grosses Battes)	1	0	0	84.57	1.04	-55.5	0	25/09/2023
Brabant Wallon	Basse Wavre (Dyle)	1	0	0	75.63	0.50	-59.2	0	25/09/2023
Antwerpen	Antwerpen-Zuid	1	0	1	74.26	0.60	23.3	9	15/03/2023
Luxembourg	Arlon	1	0	0	57.90	0.80	-52.4	0	30/08/2023

¹ : the viral load normalized with the maximum viral load measured in the corresponding catchment area during the ninth wave (i.e. from 21th of November 2022 till the first of January 2023).

² : the viral load computed on the mean of the replicates of the three targeted gene fragments as explained in section "3.2 Wastewater results". The mean viral load is expressed in 10¹² copies/day/100k inhabitants.

³ : the slope (%/week) of the past 7 days moving average of the viral load if the corresponding concentration is above the estimated limit of quantification.

⁴ : the cumulative number of days of increase of the past 14 days moving average of the viral load.

⁵ : date at which the measured viral load was the highest since the beginning of the ninth wave. If the date was between the 21th of November 2022 and the first of January 2023, the date is considered to be during the ninth wave and mentioned as such.

Table A2: Areas for which the Fast Increase indicator is positive (3 out of 42 on the October 04th 2023).

Province	WWTP	High	Fast	Incr.	Norm. viral load (%) ¹	Mean viral load ²	Norm. evol. (%/week) ³	Incr. days ⁴	Date Max cc ⁵
Limburg	Genk	1	1	1	155.23	2.35	201.2	9	08/03/2023
Antwerpen	Deurne	1	1	1	255.33	1.41	149.5	9	08/03/2023
Liège	Amay	1	1	1	245.51	1.19	112.4	9	15/03/2023

¹ : the viral load normalized with the maximum viral load measured in the corresponding catchment area during the ninth wave (i.e. from 21th of November 2022 till the first of January 2023).

² : the viral load computed on the mean of the replicates of the three targeted gene fragments as explained in section “3.2 Wastewater results”. The mean viral load is expressed in 10¹² copies/day/100k inhabitants.

³ : the slope (%/week) of the past 7 days moving average of the viral load if the corresponding concentration is above the estimated limit of quantification.

⁴ : the cumulative number of days of increase of the past 14 days moving average of the viral load.

⁵ : date at which the measured viral load was the highest since the beginning of the ninth wave. If the date was between the 21th of November 2022 and the first of January 2023, the date is considered to be during the ninth wave and mentioned as such.

Table A3: Areas for which the Increasing Trend indicator is positive (12 out of 42 on the October 04th 2023).

Province	WWTP	High	Fast	Incr.	Norm. viral load (%) ¹	Mean viral load ²	Norm evol. (%/week) ³	Incr. days ⁴	Date Max cc ⁵
West-Vlaanderen	Oostende	0	0	1	2.40	0.23	0.0	16	9 th wave
West-Vlaanderen	Harelbeke	0	0	1	1.07	0.08	0.0	14	9 th wave
Antwerpen	Mechelen-Noord	0	0	1	15.79	0.31	47.7	14	08/03/2023
Liège	Amay	1	1	1	245.51	1.19	112.4	9	15/03/2023
Antwerpen	Antwerpen-Noord	1	0	1	93.39	0.51	67.1	9	08/03/2023
Antwerpen	Antwerpen-Zuid	1	0	1	74.26	0.60	23.3	9	15/03/2023
Antwerpen	Deurne	1	1	1	255.33	1.41	149.5	9	08/03/2023
Limburg	Genk	1	1	1	155.23	2.35	201.2	9	08/03/2023
Oost-Vlaanderen	Gent	0	0	1	3.34	0.15	0.0	9	08/03/2023
Limburg	Hasselt	0	0	1	37.89	0.36	47.2	9	08/03/2023
West-Vlaanderen	Roeselare	0	0	1	4.03	0.13	0.0	9	05/10/2022
Antwerpen	Turnhout	0	0	1	9.30	0.21	0.0	9	01/03/2023

¹ : the viral load normalized with the maximum viral load measured in the corresponding catchment area during the ninth wave (i.e. from 21th of November 2022 till the first of January 2023).

² : the viral load computed on the mean of the replicates of the three targeted gene fragments as explained in section "3.2 Wastewater results". The mean viral load is expressed in 10¹² copies/day/100k inhabitants.

³ : the slope (%/week) of the past 7 days moving average of the viral load if the corresponding concentration is above the estimated limit of quantification.

⁴ : the cumulative number of days of increase of the past 14 days moving average of the viral load.

⁵ : date at which the measured viral load was the highest since the beginning of the ninth wave. If the date was between the 21th of November 2022 and the first of January 2023, the date is considered to be during the ninth wave and mentioned as such.

Table A4: Areas for which none of the three indicators is positive (23 out of 42 on the October 04th 2023).

Province	WWTP	High	Fast	Incr.	Norm . viral load (%) ¹	Mean viral load ²	Norm evol. (%/week) ³	Incr. days ⁴	Date Max cc ⁵
Oost-Vlaanderen	Aalst	0	0	0	15.34	0.39	21.9	2	08/03/2023
Vlaams-Brabant	Beersel	0	0	0	9.48	0.65	0	0	9 th wave
West-Vlaanderen	Brugge	0	0	0	5.81	0.26	-21.5	0	04/01/2023
Brussels	Brussels-North	0	0	0	4.59	0.7	-64.1	0	9 th wave
Brussels	Brussels-South	0	0	0	4.81	0.34	-59.7	0	03/10/2022
Oost-Vlaanderen	Dendermonde	0	0	0	36.62	0.19	0	2	06/02/2023
Oost-Vlaanderen	Destelbergen	0	0	0	2.36	0.07	0	0	17/10/2022
Hainaut	Froyennes	0	0	0	41.28	0.47	-12.9	0	06/09/2023
Vlaams-Brabant	Grimbergen	0	0	0	2.17	0.32	-42.1	2	9 th wave
Limburg	Houthalen-Centrum	0	0	0	1.01	0.04	0	0	9 th wave
Vlaams-Brabant	Leuven	0	0	0	5.34	0.41	-41.7	2	9 th wave
Vlaams-Brabant	Liedekerke	0	0	0	16.74	0.87	41	2	9 th wave
Liège	Liege Oupeye	0	0	0	19.46	0.23	0	0	08/03/2023
Liège	Liege Sclessin	0	0	0	19.66	0.42	-8	0	08/03/2023
Luxembourg	Marche-en-Famenne	0	0	0	44.01	0.64	-66.3	0	27/09/2023
Hainaut	Marchienne-au-Pont	0	0	0	31.26	0.68	27.4	2	9 th wave
Hainaut	Montignies-sur-Sambre	0	0	0	18.99	0.19	0	2	22/03/2023
Namur	Mornimont	0	0	0	20.33	0.42	6.5	0	18/09/2023
Hainaut	Roselies	0	0	0	46.34	0.46	-3.8	2	06/09/2023
Brabant Wallon	Rosieres (Lasne)	0	0	0	33.14	0.26	-31.1	0	06/09/2023
Oost-Vlaanderen	Sint-Niklaas	0	0	0	14.32	0.36	60.1	2	9 th wave
Limburg	Tessenderlo	0	0	0	21.7	0.17	61.6	0	15/03/2023
Hainaut	Wasmuel	0	0	0	30.85	0.36	65.9	0	9 th wave

¹ : the viral load normalized with the maximum viral load measured in the corresponding catchment area during the ninth wave (i.e. from 21th of November 2022 till the first of January 2023).

² : the viral load computed on the mean of the replicates of the three targeted gene fragments as explained in section "3.2 Wastewater results". The mean viral load is expressed in 10¹² copies/day/100k inhabitants.

³ : the slope (%/week) of the past 7 days moving average of the viral load if the corresponding concentration is above the estimated limit of quantification.

⁴ : the cumulative number of days of increase of the past 14 days moving average of the viral load.

⁵ : date at which the measured viral load was the highest since the beginning of the ninth wave. If the date was between the 21th of November 2022 and the first of January 2023, the date is considered to be during the ninth wave and mentioned as such.

Table A5: Areas for which the data are missing on October 04th 2023.

Province	WWTP
Antwerpen	Aartselaar